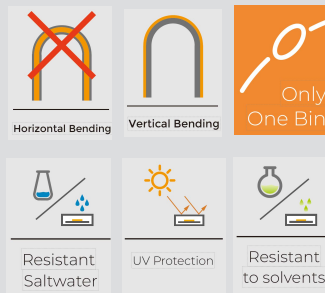


GLOPRO SAUNA 1617

FEATURES

- Silicone co-extrusion IP67 neon offers premium UV resistance, chemical stability, and protection against abrasion.
- Vertical bending with uniform light and dimmable function.
- Production Length is up to 30m.
- Support freely configurable in length by small cutting increments.
- Matt treatment optional for smooth surface and resistant to dust, using Lumileds LEDs, the SDCM of finished product can be minimized to 3 steps.
- 5 years warranty, long-life LED > 50,000 hrs, 1 Bin.



SPECIFICATION

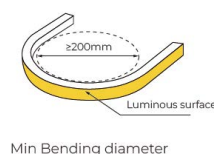
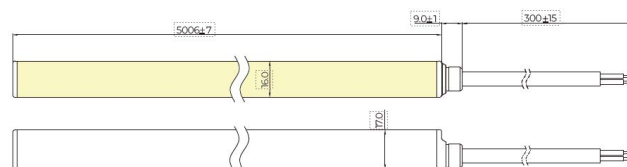
Basic Parameters

Specification	
Size	16mm (W) x 17mm (H)
Input Voltage	DC24V
Max Power	10W/1m
Lumen (per/m)	810 / 829 / 902 / 891
Efficiency (lumen per/w)	81.0 / 82.9 / 90.2 / 89.1
Colour / CCT	2700K / 3000K / 4000K / 6500K
Cutting Increment	50mm
IP Rating	IP67
CRI	≥90
Finish	White
LED Pin Temperature	Max 65°C
Storage Temperature	-25°C~ 60°C
Ambient Temperature	-25°C~ 45°C

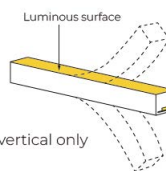
Product Ordering

CODE	COLOUR	LM/M	STOCKED
GLOPRO-24-SAUNA -1617-2700-67-W-TV	2700K	810	S/O
GLOPRO-24-SAUNA -1617-3000-67-W-TV	3000K	829	S/O
GLOPRO-24-SAUNA -1617-4000-67-W-TV	4000K	902	S/O
GLOPRO-24-SAUNA -1617-6500-67-W-TV	6500K	891	S/O

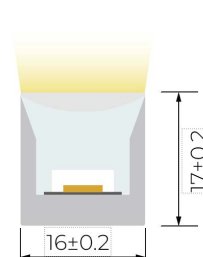
Technical Diagram



Min Bending diameter



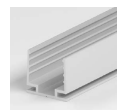
Bend vertical only



Cross section

Recommended Accessories

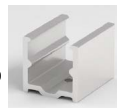
GLOPRO-24-SAUNA -1617A-1000
Aluminium profile
1000(±5)x18.1 x 18.9mm
(L x W x H)



GLOPRO-24-SAUNA -1617P-1000
PC Transparent profile
1000(±5)x 20 x 23.5mm
(L x W x H)



GLOPRO-24-SAUNA -1617A-20
Aluminium mounting clip
20(±5)x18.1 x 18.9mm
(L x W x H)



GLOPRO-24-SAUNA -1617P-35
PC Transparent clip
35(±5)x 20 x 23.5mm
(L x W x H)

