

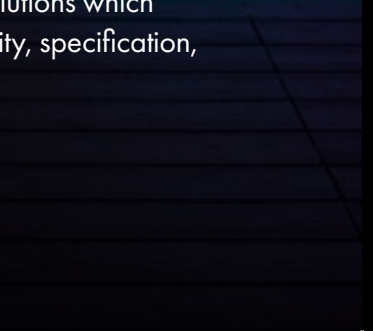
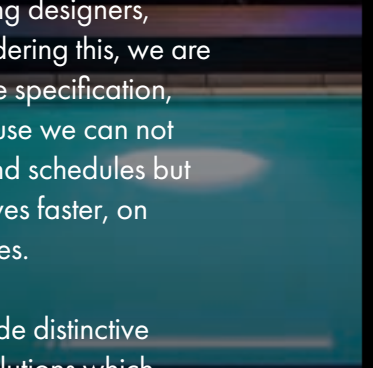
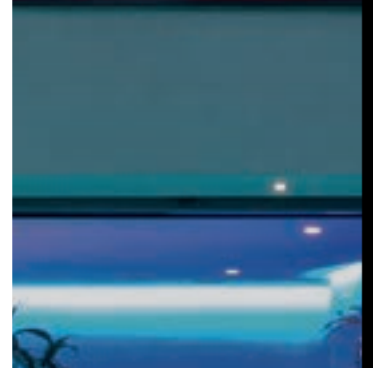
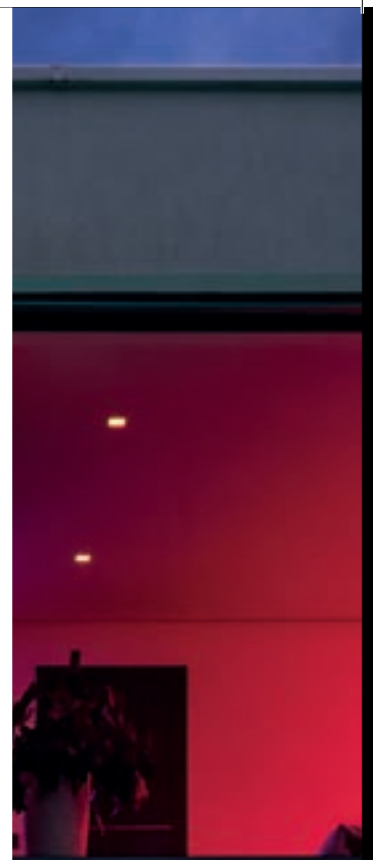




Lightcore

# CAPABILITY STATEMENT





### Company Summary

Lightcore is a forward-looking lighting company offering a full range of innovative, high-quality, turn-key lighting solutions and products for indoor and outdoor applications to the wholesale and trade industry.

Established in Brisbane in 2010, Lightcore has since delivered over 4000 projects across Australia and New Zealand with practical, reliable and cutting-edge LED lighting solutions and products at competitive prices.

We carry a lot of stock, have accounts with the major wholesalers, Australian based manufacturing facilities as well as in-house lighting designers, electricians and estimators. Considering this, we are very strong in the D&C, alternative specification, and custom solutions sector because we can not only assist with lighting designs and schedules but also deliver high-quality alternatives faster, on account terms, at competitive prices.

It is our company mission to provide distinctive LED application-based lighting solutions which outperform our industry in durability, specification, customisation and availability.

Est.  
**2010**

**4300+**  
Completed  
Projects

**\$20MM**  
Liability

**\$5MM**  
Indemnity

Highly  
**Specialist**  
Staff

**5 Year**  
Minimum  
Warranty

**D&C**  
Experts

**Custom**  
Solutions

Design &  
Installation  
**Support**

Stock on  
hand  
**Fast  
Delivery**

**Competitive**  
Pricing

**Sustainability**  
Focused

High  
**Quality**

**Indoor &  
Outdoor**

**Local &  
Personal  
Service**

## EXCEPTIONAL CUSTOMER CARE & SERVICE

We are proven to provide exceptional customer care and service by continuously seeking customer feedback from customers to continually improving. We strive to respond to all enquiries within two hours and our average delivery time for core product is 2 business days. We never want to be the cause of on-site delays or project churn - so if we need to jump in the car at 4pm on a Friday to deliver an order on-time, we will!

## QUALITY

Quality is hard to fake when it comes to lighting - seeing is believing. Our customers repeatedly provide positive feedback about the standard of our products and services and how they contribute to the success of their projects.

## LOCAL MANUFACTURING & SUSTAINABILITY

Lightcore is one of the few Australian lighting companies manufacturing many of its products locally. By investing in the latest machinery and training, we not only deliver high-quality custom lighting solutions faster and more affordably but also significantly reduce carbon emissions by minimising the frequency of imports. We strive for sustainability by embracing smarter business practices, solutions, and products.

## PASSION & EXPERIENCE

Lightcore was founded and is led by people with a shared passion for lighting. Trading since 2010, Lightcore has successfully delivered 4000+ projects to its loyal customers across Australia and New Zealand.

## EDUCATION & CONSULTATION

We offer more than just a transaction - we also provide advice on the best way to approach your projects. Plus, our expert team can provide you with the information you need to pass onto other project stakeholders. We also provide lux calculation and product scheduling services.

## ENDURING VALUE

We combine design goals with end-user goals and product suitability to ensure we deliver on our promises and achieve the best project outcomes. This strategic approach improves project workflow and saves our customers 20% on average while exceeding quality and service expectations. We achieve this through in-house manufacturing and by working directly and transparently with suppliers, designers, wholesalers and contractors.

## RELIABILITY

Our proven process and experience helps us to identify red flags early and prevent issues occurring - saving time, money and reputation. Our warranties are some of the best in the industry with an average of 5-years.





# Differentiators

✓ SPEEDY SERVICE

✓ STOCK ON-HAND

✓ BEST VALUE FOR MONEY

✓ INDUSTRY EXPERIENCE

✓ CUSTOMISATION / ALTERNATE SPEC SERVICES

✓ ON-SITE QUOTING AND PROJECT ADVICE

✓ IN-HOUSE MANUFACTURING

✓ LITERALLY GO THE EXTRA MILE

COMMERCIAL



WELLNESS



KITCHENS

HOSPITALITY



PUBLIC

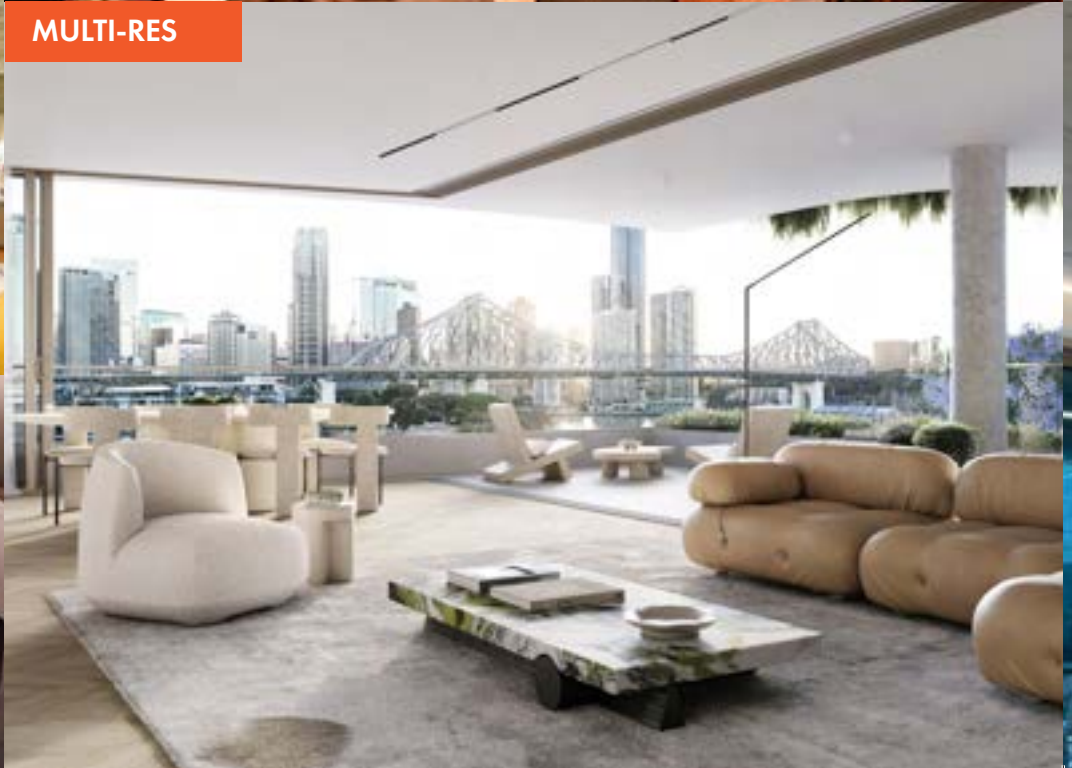


RETAIL

MULTI-RES



SUBMERSIBLE



OFFICE



SIGNAGE

BATHROOM

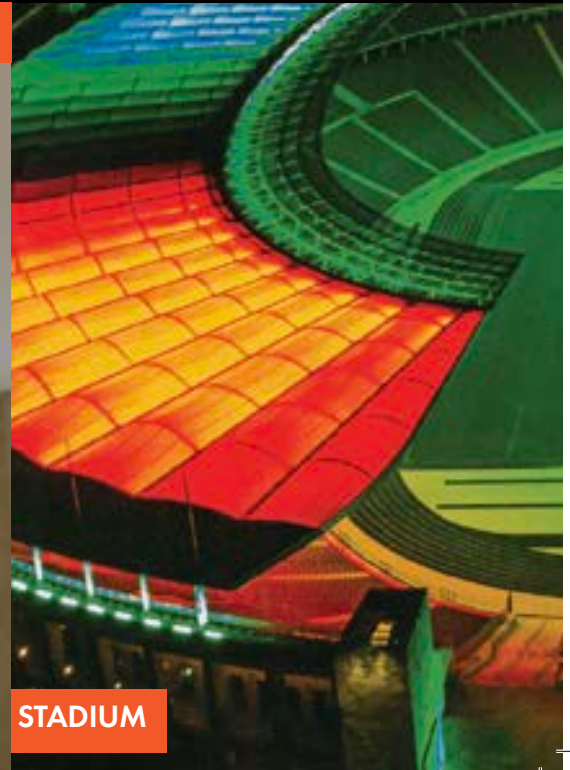
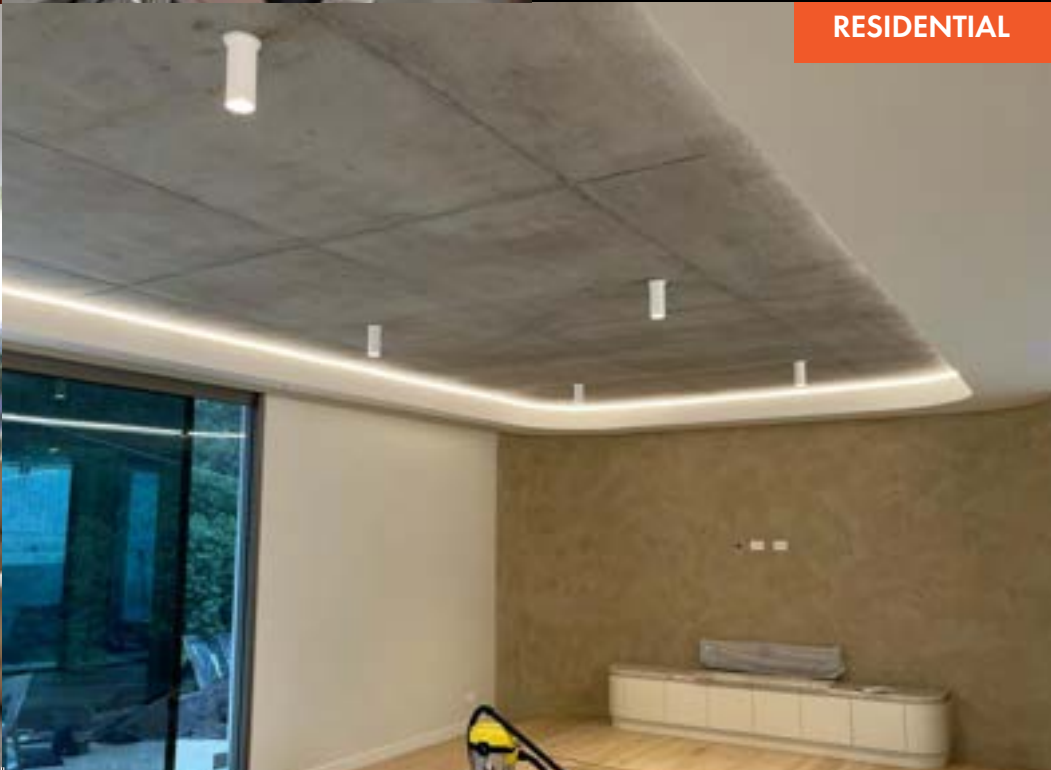


HEALTH



# CORE COMPETENCIES

RESIDENTIAL



STADIUM



BLACK GLOPRO NEON

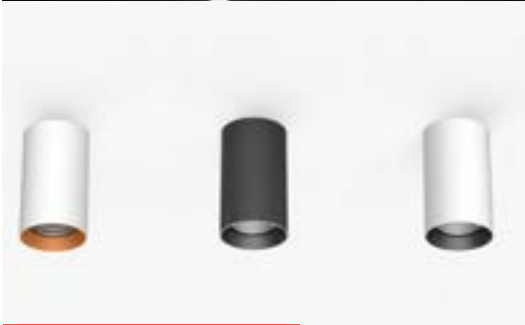


HANDRAIL



STRIPCLIPZ

DOT FREE LED



CEILING LIGHTING

NEON ROPE



RGB & PIXEL

FLEXIBLE WALL WASH

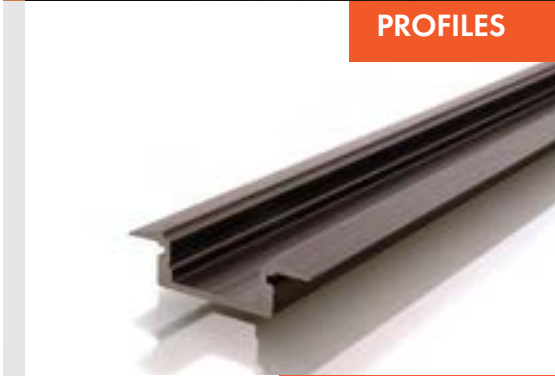


GLOPRO NEON



UNDERWATER SPOTS

PROFILES

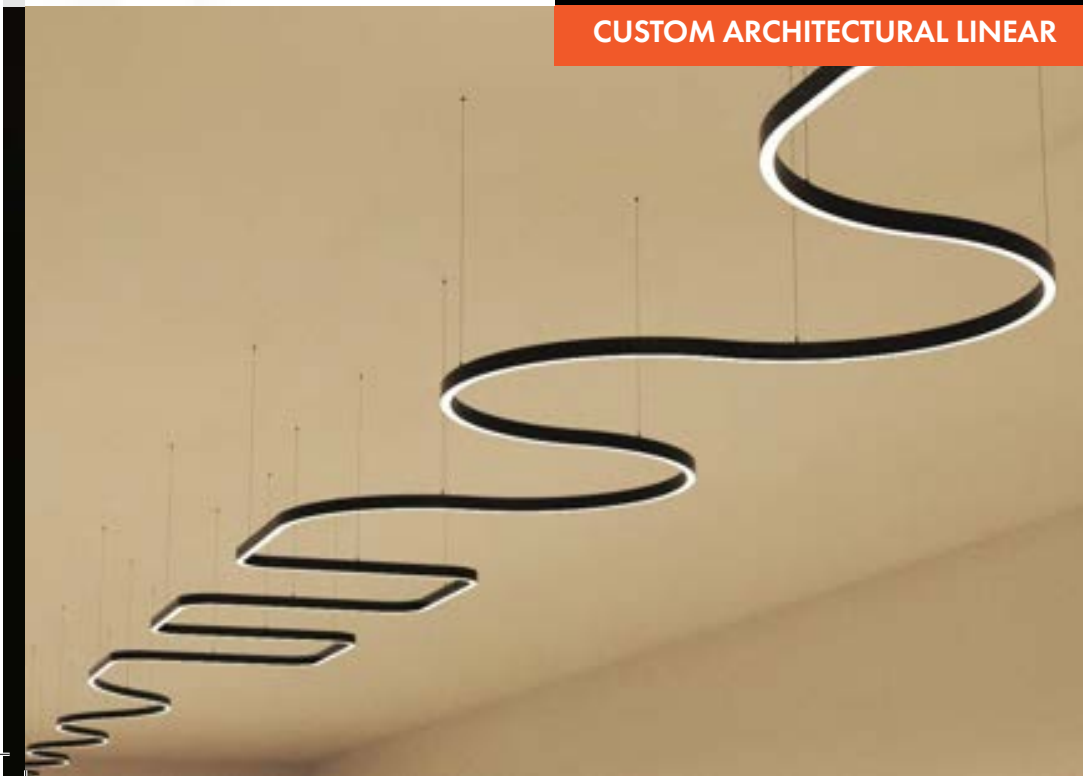


POWER SUPPLIES




**CORE  
PRODUCTS**

CUSTOM ARCHITECTURAL LINEAR



CONTROL

The image features a minimalist design with a large orange L-shaped block on the left and bottom, and a black block on the right and top. The text 'FEATURED PROJECTS' is centered in the black area in a bold, orange, sans-serif font.

**FEATURED  
PROJECTS**



**Public Space**



**Hospitality**



**Retail**



**Hotel & Student**



**Advertising**



**Workspace**



**Shopping Centre**



**Facade**



**Resort**



**Wellness**



**Pool & Spa**



**Mult Residential**



## Public Space— The Jem Southbank, QLD



**WATCH VIDEO**

**Client:** South Bank Corporation

**Brief:** Replace the original and failing lighting with new lighting that will integrate with existing control system.

**Solution:** The original lighting and control system, installed in 2008, was a unique, internationally acclaimed interactive lighting experience. Over time, the lighting suffered significant wear and tear, leading to frequent malfunctions. To avoid the need for a new control system which would be highly complex and expensive, we reverse-engineered the original lighting and custom-manufactured new lights using advanced chip sets and LEDs that seamlessly integrated with the existing system in a plug-and-play manner. During a three week period we replaced the original lighting, installed the new lights, and improved the control system for easier maintenance.

**Completed:** June 2024

*“Lightcore exceeded expectations, delivering a solution others could not which saved us significant time and money.”*

**Zoe Bayer, Project Manager, South Bank Corporation**





## Hospitality — The Stratton Newstead, QLD

**Client:** Newstead Hospitality Group (NHG)

**Brief:** Design, supply, and facilitate a unique, dynamic, minimal, and multi-layered lighting solution for WWII hangers being converted into bar and kitchen.

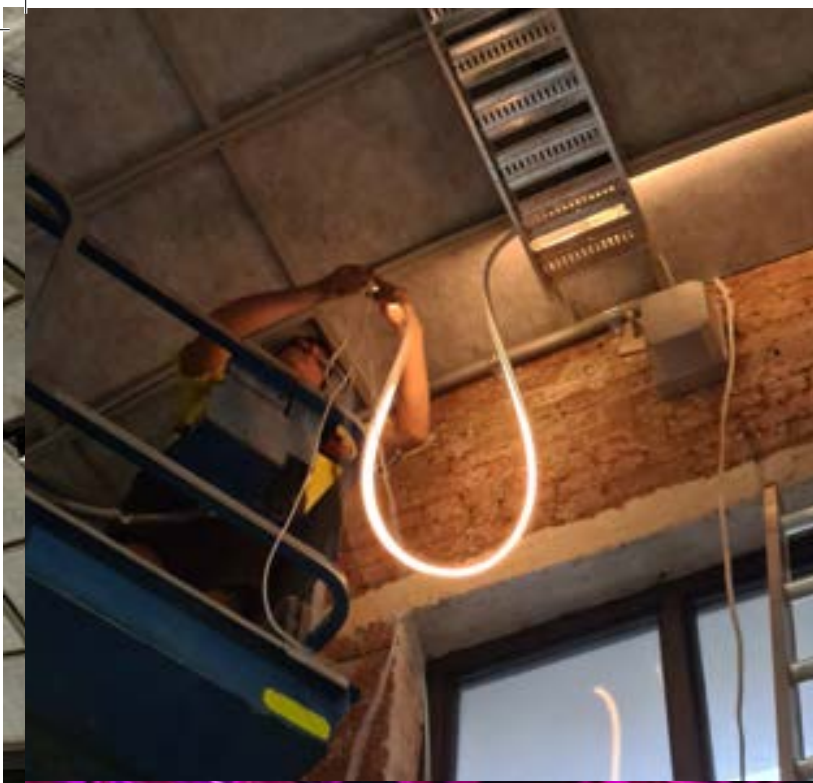
**Solution:** Due to the unique shape of the hangers, we decided to take a very hands-on approach. This included many on-site visits and after-hour testing sessions. We ended up using:

- GLOPRO RGBW Neon Flex for the feature archways.
- Dotless LED strip for the bar, bathroom mirrors, and general wall washing.
- RGBW up-lighting to showcase vertical beams.
- Narrow beam track lighting with honeycomb diffusers for general and table lighting.

**Completed:** March 2022

*"It was really important that we got the lighting right. Lightcore went above and beyond and we're very happy with the result."*

**Ben Brown & Tarryn McMullen, Owners, NHG**







## Retail — Greenvale Fresh, Greenvale, VIC

**Client:** Valor Group / Studio IOD

**Brief:** Develop lux-compliant lighting schedule and supply to awarded contractor.

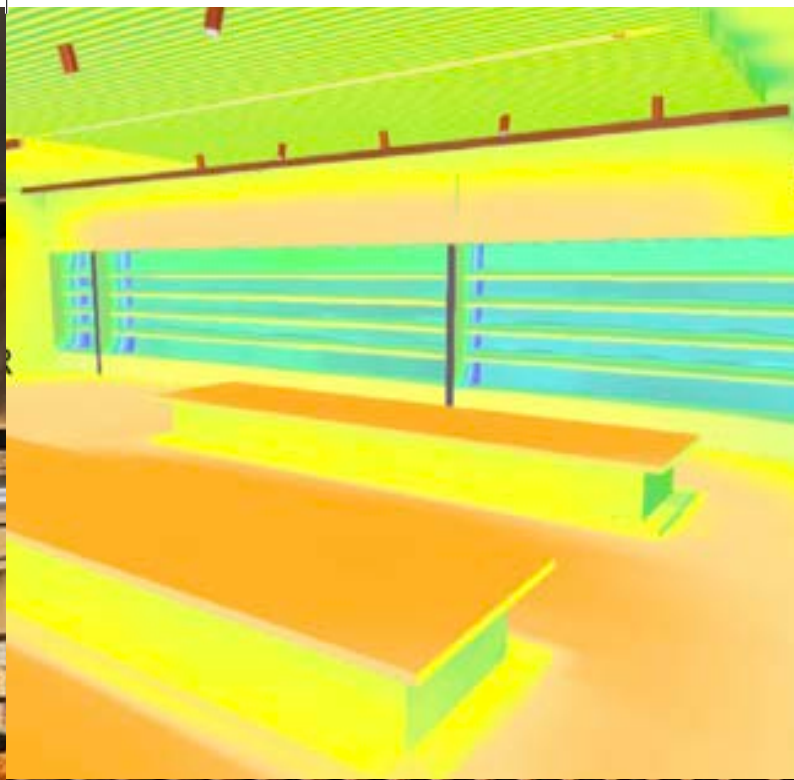
**Solution:** Provided schedules, supporting datasheets and lux reports to support the design vision and budget.  
Products used:

- Vega 25W track lighting
- Slimline 25x25mm profile with high-brightness strip
- Dot-free LED strip
- Liquid lux 35x35 linear lighting

**Completed:** September 2023

*Lightcore is great to work with! They help with scheduling, lux plots, design, product supply, and installation coordination. Highly recommend!*

**Isabelle Oliveri, Design Director, Studio IOD**





## Hotel & Student Living — UQ Student Residences, St. Lucia, QLD

**Client:** McNab / University of Queensland / Haines Electrical

**Brief:** Source and supply suitable alternatives to the high-end wall and linear lighting on the schedule.

**Solution:** Developed and supplied custom up/down wall light and linear lighting solution which saved the customer \$200,000+.

**Completed:** November 2021

*"Lightcore makes everything really easy for you. We wish more suppliers worked like them"*

**Cody Gosling, Project manager, Haines Electrical**





## Advertising — Lumina Gold Coast Health & Science Precinct, Southport, QLD

**Client:** Economic Development Queensland (EDQ)

**Brief:** Design, supply, and install custom, dynamic, solar-powered lighting solutions for eight highway-adjacent billboards in Southport to enhance night-time exposure to oncoming traffic.

**Solution:** To provide even and dynamic illumination with minimal glare, we used custom made RGBW Glopro 1516 linear lighting with remote colour control.

Custom cantilever brackets were prototyped, tested, and refined before being certified and fabricated. We applied the same process to the solar panel housing, designing custom, wall-mounted brackets to conceal the panels and control gear so only the billboards were visible to oncoming traffic.

**Completed:** June 2022

*"Lightcore delivered exactly what they promised, on time and within budget."*

**Natalia Palacio, Senior Engagement & Marketing Officer,  
Economic Development Queensland**



LIGHT OFF

LIGHT ON





**Work —  
Daddy Long Legs Tattoo  
Studio,  
Norman Park, QLD**

**Client:** Daddy Long Legs

**Brief:** Design, supply, and install a custom spider-web shaped commercial light to be used as both feature and functional lighting within a boutique tattoo studio.

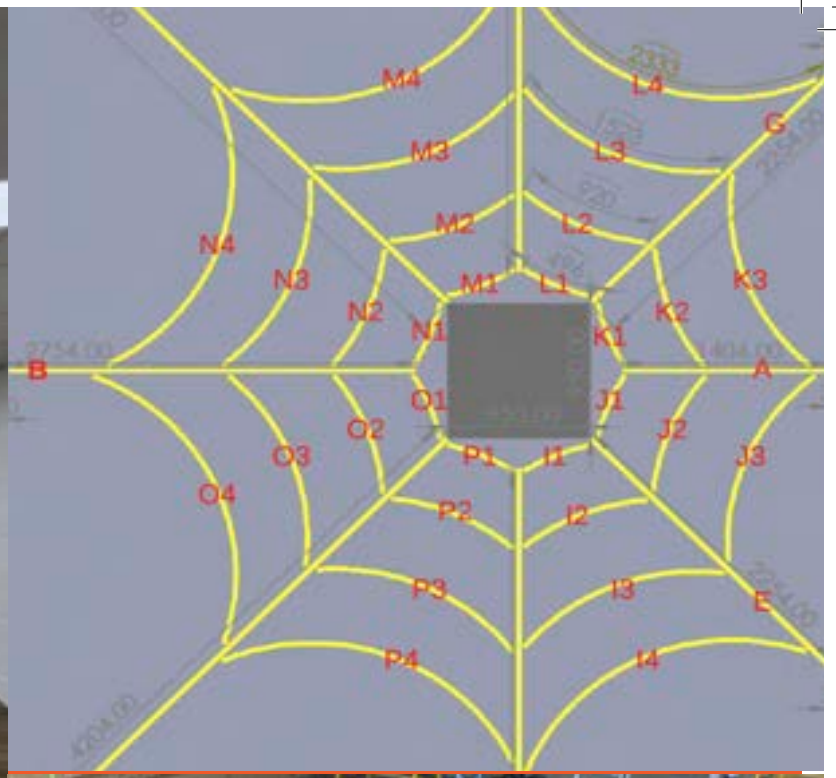
**Solution:** After meeting on-site and clearly understanding the client's goals and site limitations, we developed and supplied a spider-web RCP utilising our Liquid Lux 3535 linear range. We also provided supporting lighting calculations for client review.

After client approval, we custom-built and tested the fixture off-site and had the entire project delivered and installed within 8 weeks.

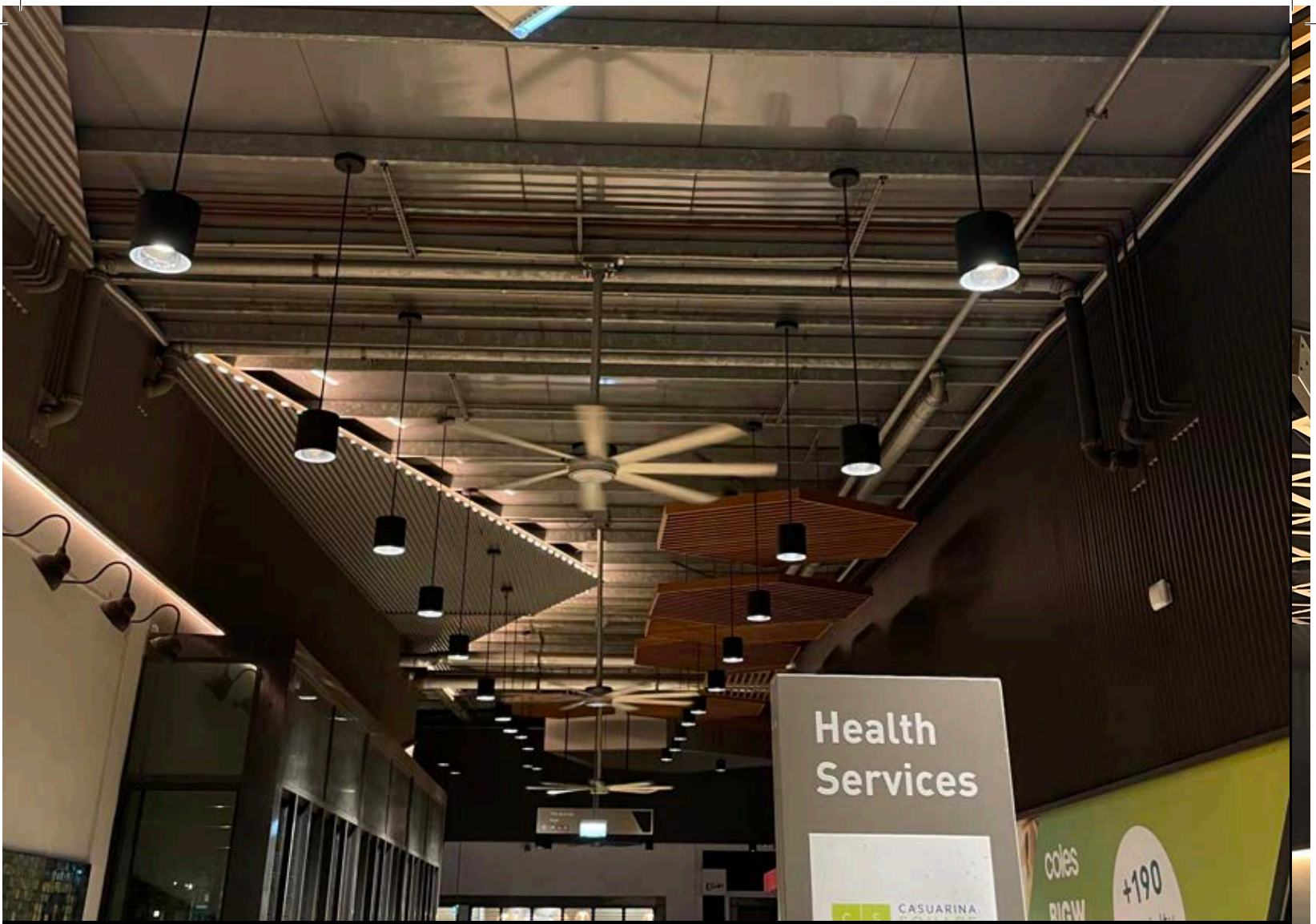
Completed: June 2023

*"Lightcore designed, supplied, and installed everything on-time and within budget. The end result is a real show stopper!"*

**Matt Curzon, Owner, Daddylonglegs**







## Shopping Centre — Casurina Shopping Centre, The Quarter Darwin, NT

**Client:** Sentinel Property Group

**Brief:** Supply a mix of surface-mounted and suspended commercial-grade light fittings to replace 270 failing fixtures.

**Solution:** We flew to Darwin to inspect the property and meet the on-site management and maintenance team. This helped us identify additional issues, such as vandalism, lack of supplier support, maintenance challenges, and poor light output. We then developed a custom fitting that was easy to install, purpose built to withstand harsh NT weather and vandalism, and provided better lighting. Everything was delivered within 12 weeks of PO, our solution was also more affordable than generic options previously submitted by others.

**Completed:** February 2023

*"Lightcore invests the time to properly understand the project and problem to deliver high-quality solutions, quickly and competitively."*

**Chris Murray, Project manager, Sentinel Property Group**





**Facade —  
609 Stanely St,  
Woolloongabba, QLD**

**Client:** Steve Wilson / Brisbane City Council

**Brief:** Design, supply and install a dynamic lighting solution for heritage facade.

**Solution:** Using RGBW Glopro Neon flex sensitively installed to the lower/middle/upper facade sections to provide even illumination while also highlighting facade architectural elements and enabling individual wireless control and colour selection. Indirect external Dot-free LED also installed to the building signage. Everything was installed within one week.

**Completed:** October 2020

*"We love this heritage building and the lighting result is amazing, everyone asks about it and our tenants are thrilled"*

**Steve Wilson, Building Owner**





## Resort — Sebel Noosa, Noosa, QLD

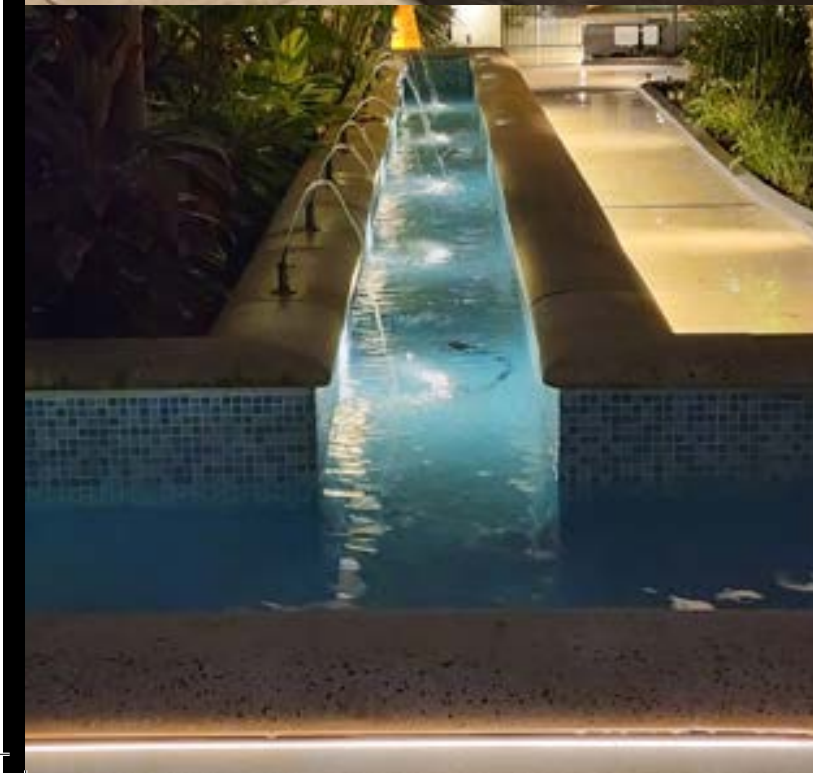
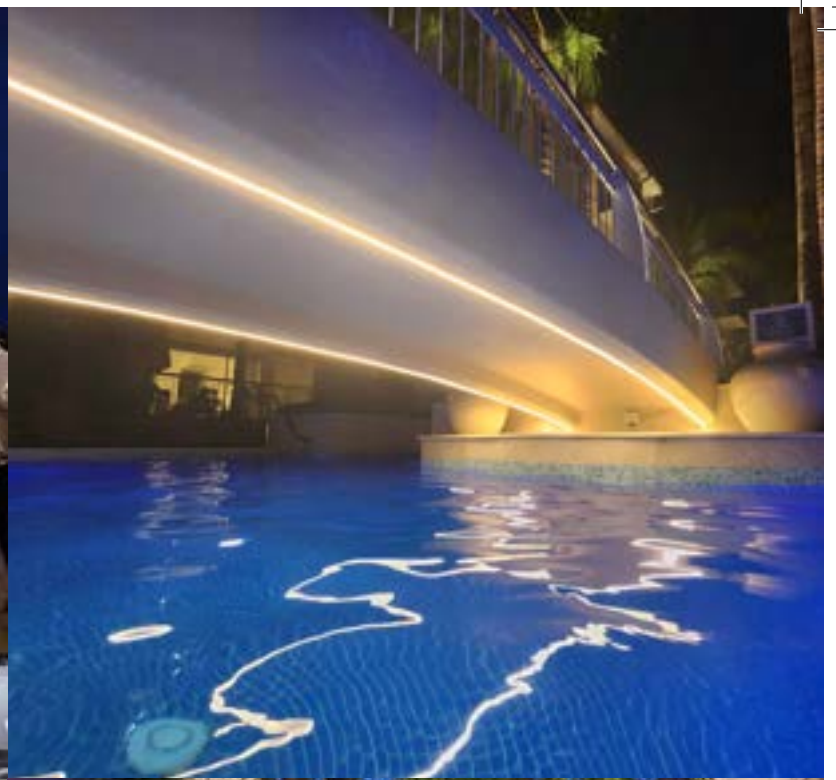
**Client:** Sebel Noosa  
**Designed by:** F-POV

**Brief:** Develop and supply an alternative lighting schedule that is more affordable, available, and of equivalent or better quality and aesthetic.

**Solution:** Audited the original specified lighting schedule and supplied a hybrid schedule including original and alternative products. By doing this we delivered the original design goals, simplified the supply process and saved the client upwards of \$100,000.

**Completed:** Feb 2024

*"Lightcore are great to work with and deliver incredible value"*  
**Nathan Palmer, Project Electrician**





## Wellness — ifeelgood, Coopers Plains, QLD

**Client:** ifeelgood

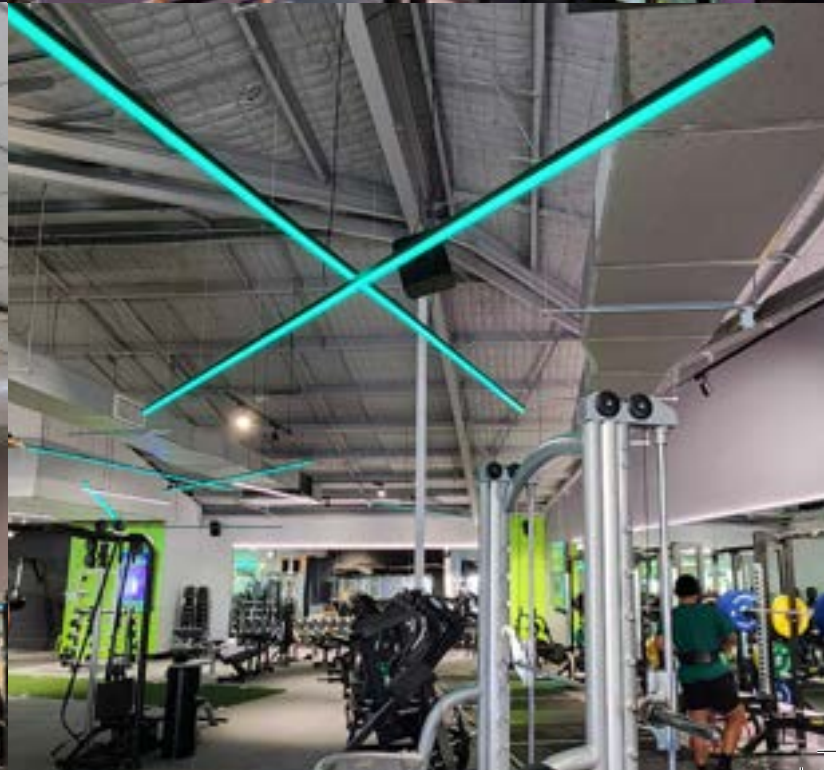
**Brief:** Supply and install custom gym lighting for D&C fitout.

**Solution:** Working with the client to develop a simple and unique lighting layout that would differentiate the gym, support the brand of safety, while also provide adequate lighting throughout. We custom made all of the custom suspended linear in-house and had the project delivered and installed within 4 weeks of order.

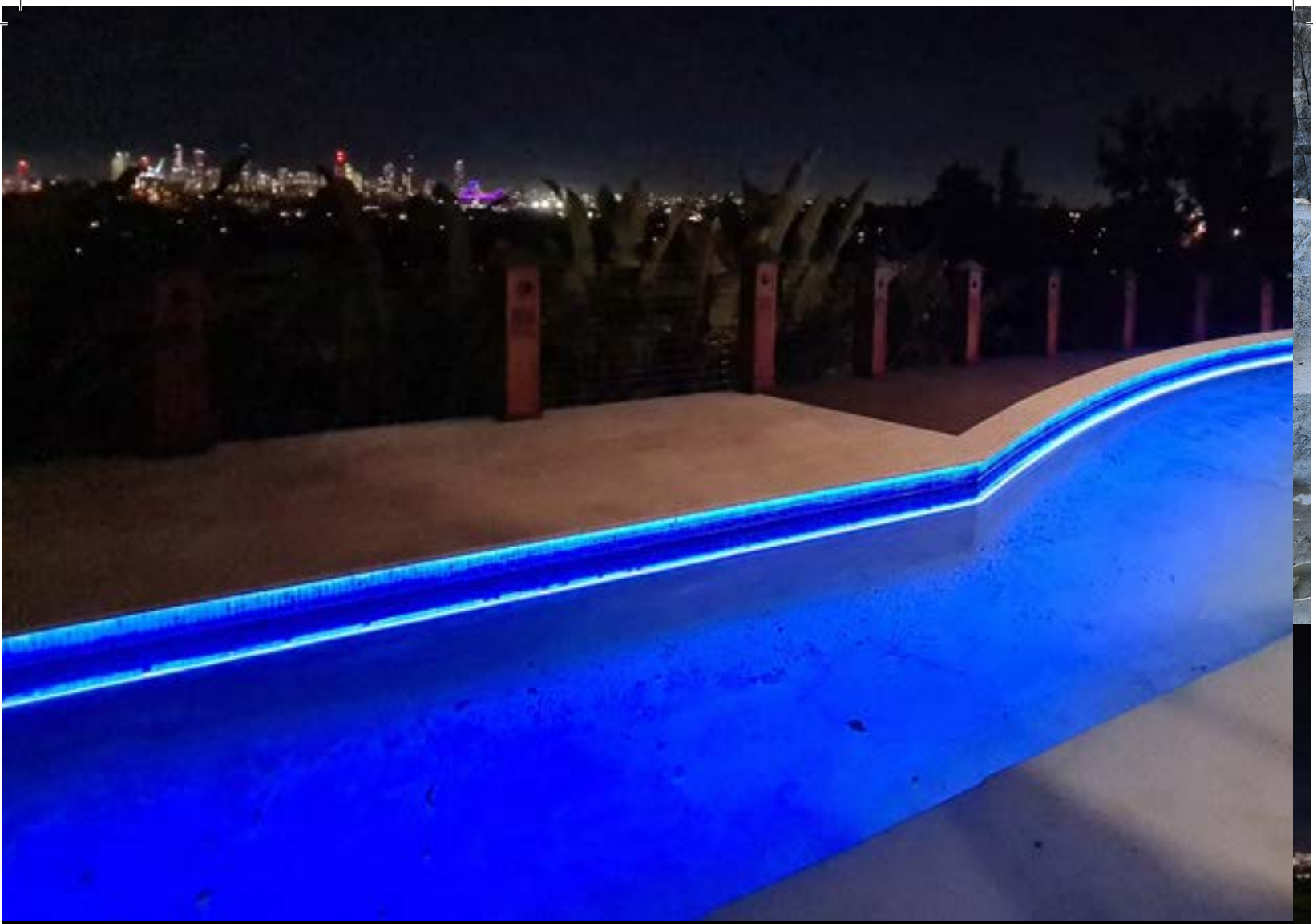
**Completed:** October 2023

*“Always enjoy working with Lightcore. They’ve got a great team and just get the job done”*

**Martin Upton, Owner, ifeelgood**







## Pool — Residential project, Coorparoo, QLD

**Client:** Private

**Brief:** To supply custom made and highly durable RGBW lighting to go beneath pool copings, under steps, and around spa.

**Solution:** Meeting with contracted electrician and pool builder on-site to review installation approach and constraints. Check-measures were conducted and then we custom made everything to be as plug and play as possible, including custom 20m cable lengths. Installation was seamless.

Products used:

- Glopro 1220 (side bendable)
- Glopro 1010 (top bendable)

**Completed:** June 2022

*"We've been using Lightcore for years, always a joy to work with"*  
**Martin Egerton, Project Electrician, MCJ Electrical**





## Multi Residential — Atria, Toowong, QLD

*"Lightcore is extremely proactive and a pleasure to work with."*

**Shane Cook, Site Manager, Graya**

*"Lightcore provide great ideas and project support."*

**Zanee Mathews, Senior Interior Designer, Z Architects**

**Builder:** Graya

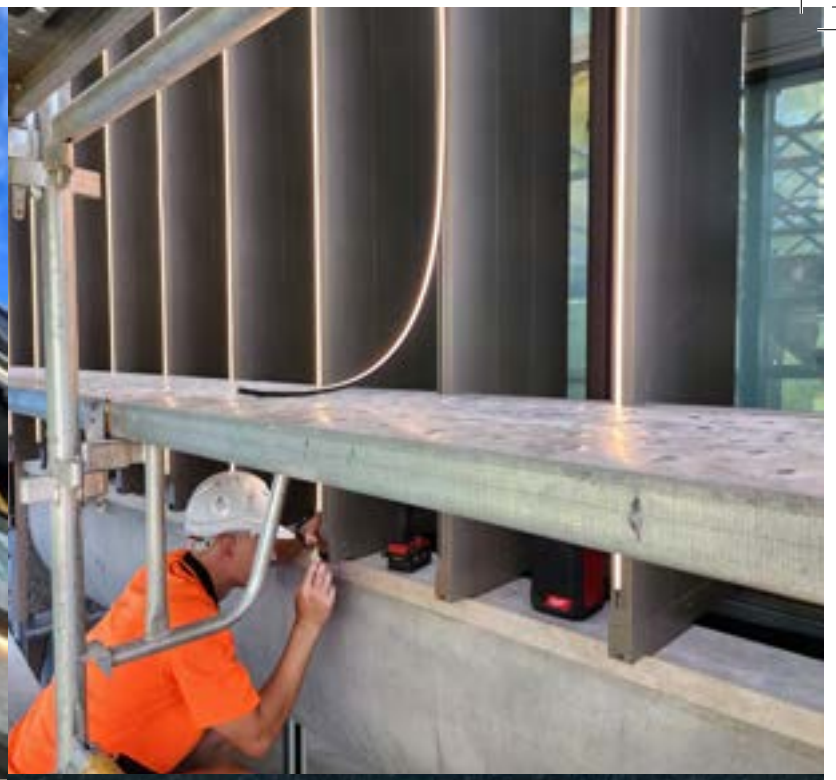
**Architect:** Z Architects

**Electrician:** Acot Group

**Brief:** Assist with lighting design, schedule development, full scope supply, and supply management.

**Solution:** Closely collaborating with ZA, Graya, the wholesalers, the end client, and multiple brands like Rakumba and Space, we remove a lot of the red tape and streamline the lighting supply process. Large luxury projects face regular changes and challenges and require quick solutions to avoid costly delays. Lightcore's proactive, solution driven, approach saves significant time, cost, and stress (at the time of writing, we estimate approximately 12 weeks have been saved and \$150,000 in supply costs). We also securely store all products in our warehouse for faster delivery.

**Completed:** In progress, expected completion end of 2024







[lightcore.com.au](http://lightcore.com.au)

1-300-652-719

[hello@lightcore.com.au](mailto:hello@lightcore.com.au)

[@lightcore\\_lighting](https://twitter.com/lightcore_lighting)

Delivering bright lighting solutions  
since 2010