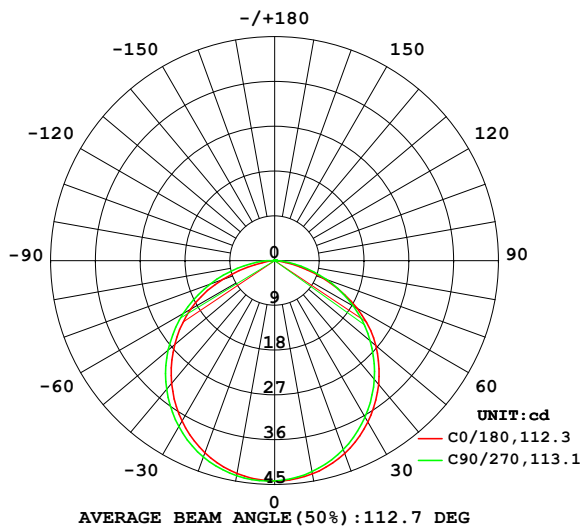


## LUMINAIRE PHOTOMETRIC TEST REPORT

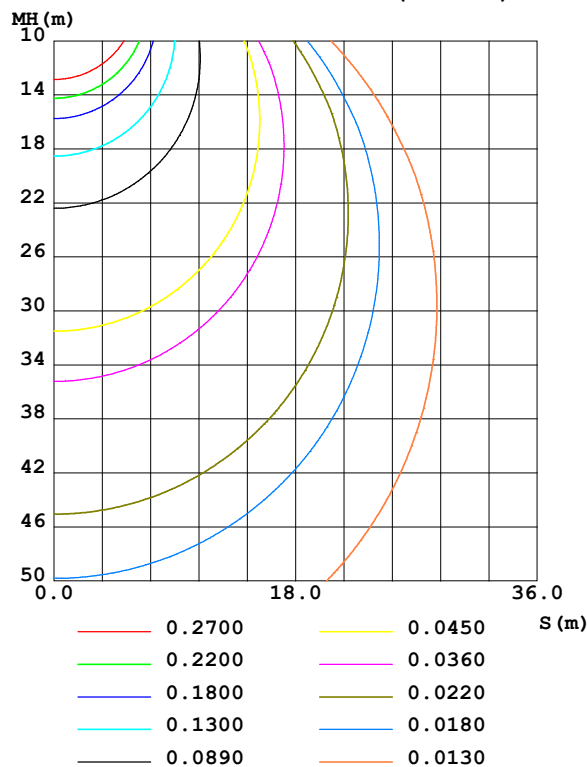
Test:U:23.998V I:0.4786A P:11.485W PF:1.0000 Freq:49.99Hz Lamp Flux:1.60352x80 lm		
NAME: 1220-A 幻影RGB	TYPE:	WEIGHT:
SPEC.:	DIM.:	SERIAL No.:
MFR.:	SUR.: 0.012*1	Shielding Angle:

DATA OF LAMP		PHOTOMETRIC DATA				Eff: 11.17 lm/W
MODEL	RGB	I <sub>max</sub> (cd)	44.32	S/MH(C0/180)	1.25	
NOMINAL POWER(W)	12	LOR(%)	100.0	S/MH(C90/270)	1.29	
RATED VOLTAGE(V)	24	TOTAL FLUX(lm)	128.28	η UP,DN(C0-180)	0.6,47.8	
NOMINAL FLUX(lm)	1.60352	CIE CLASS	DIRECT	η UP,DN(C180-360)	0.5,51.1	
LAMPS INSIDE	80	η up(%)	1.1	CIBSE SHR NOM	1.25	
TEST VOLTAGE(V)	24	η down(%)	98.9	CIBSE SHR MAX	1.35	

LUMINOUS INTENSITY DISTRIBUTION DIAGRAM



C0 PLANE ISOLUX DIAGRAM (UNIT:lx)



C Range: 0 - 360DEG  
C Interval: 22.5DEG  
Test Speed: HIGH  
Temperature:25.3DEG  
Operators:  
Test Date:2024-01-10

γ Range: 0 - 180DEG  
γ Interval: 2.0DEG  
Test System:EVERFINE GO-2000B\_V1 SYSTEM V2.00.450  
Humidity:65.0%  
Test Distance:6.040m [K=1.0000]  
Remarks:

## ZONAL FLUX DIAGRAM

## ZONAL FLUX DIAGRAM:

$\gamma$	C0	C45	C90	C135	C180	C225	C270	C315	$\gamma$	$\Phi$ zone	$\Phi$ total	%lum, lamp
10	43.52	43.17	43.07	43.20	43.46	43.77	43.89	43.76	0- 10	4.189	4.189	3.27,3.27
20	41.20	40.56	40.37	40.62	41.05	41.72	41.97	41.70	10- 20	12.00	16.19	12.6,12.6
30	37.48	36.59	36.33	36.69	37.23	38.17	38.52	38.15	20- 30	18.18	34.36	26.8,26.8
40	32.51	31.45	31.15	31.58	32.22	33.37	33.79	33.34	30- 40	21.93	56.30	43.9,43.9
50	26.54	25.39	25.08	25.57	26.22	27.51	27.97	27.45	40- 50	22.80	79.10	61.7,61.7
60	19.18	18.62	18.31	18.87	19.45	20.77	21.19	20.63	50- 60	20.69	99.79	77.8,77.8
70	10.29	11.30	11.06	11.63	11.05	13.41	13.77	13.17	60- 70	15.79	115.6	90.1,90.1
80	2.317	4.254	4.133	4.579	2.615	5.989	6.252	5.682	70- 80	8.857	124.4	97,97
90	0.0105	0.6349	0.5323	0.5817	0.0052	0.8310	1.044	0.8239	80- 90	2.446	126.9	98.9,98.9
100	0.0052	0.5134	0.3654	0.4114	0.0182	0.2880	0.3074	0.4059	90-100	0.4503	127.3	99.3,99.3
110	0.0052	0.4374	0.3049	0.3376	0.0339	0.2146	0.2286	0.3216	100-110	0.3116	127.7	99.5,99.5
120	0.0182	0.3536	0.2655	0.1902	0.0495	0.1230	0.1760	0.2425	110-120	0.2179	127.9	99.7,99.7
130	0.0390	0.2620	0.2392	0.1608	0.0625	0.0995	0.1393	0.1713	120-130	0.1463	128.0	99.8,99.8
140	0.0521	0.1860	0.2103	0.1258	0.0833	0.0995	0.1235	0.1239	130-140	0.1006	128.1	99.9,99.9
150	0.0651	0.1336	0.1761	0.1082	0.0963	0.0995	0.1148	0.1154	140-150	0.0731	128.2	99.9,99.9
160	0.0807	0.1167	0.1315	0.1002	0.0989	0.0995	0.1117	0.1145	150-160	0.0507	128.2	100,100
170	0.0911	0.1119	0.1193	0.1002	0.0989	0.0995	0.1108	0.1137	160-170	0.0302	128.3	100,100
180	0.0989	0.1100	0.1183	0.1002	0.0989	0.0995	0.1104	0.1160	170-180	0.0101	128.3	100,100
DEG	LUMINOUS INTENSITY:cd									UNIT:lm		

Conical surface Flux(90deg): 70.067 lm

%lum = 54.6%

%lamp = 54.6%

Conical surface Flux(120deg): 99.794 lm

%lum = 77.8%

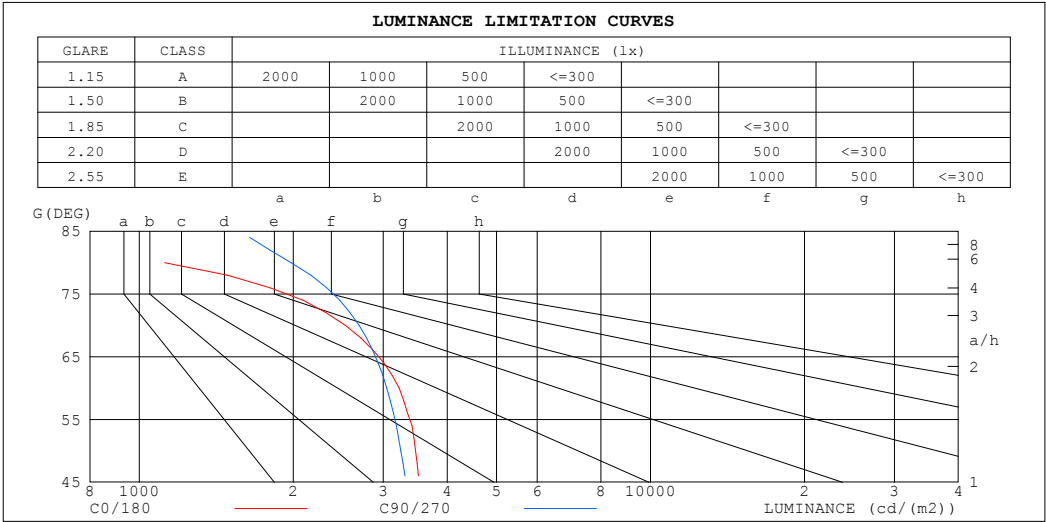
%lamp = 77.8%

C Range: 0 - 360DEG  
 C Interval: 22.5DEG  
 Test Speed: HIGH  
 Temperature:25.3DEG  
 Operators:  
 Test Date:2024-01-10

$\gamma$  Range: 0 - 180DEG  
 $\gamma$  Interval: 2.0DEG  
 Test System:EVERFINE GO-2000B\_V1 SYSTEM V2.00.450  
 Humidity:65.0%  
 Test Distance:6.040m [K=1.0000]  
 Remarks:

LUMINANCE LIMITATION CURVES

Test:U:23.998V I:0.4786A P:11.485W PF:1.0000 Freq:49.99Hz Lamp Flux:1.60352x80 lm		
NAME: 1220-A 幻影RGB	TYPE:	WEIGHT:
SPEC.:	DIM.:	SERIAL No.:
MFR.:	SUR.: 0.012*1	Shielding Angle:



LUMINANCE cd/(m2)		
G (DEG)	C0/180	C90/270
85	296	1971
80	1121	1981
75	2224	2625
70	2529	2691
65	3120	3039
60	3223	3048
55	3498	3259
50	3470	3247
45	3592	3391

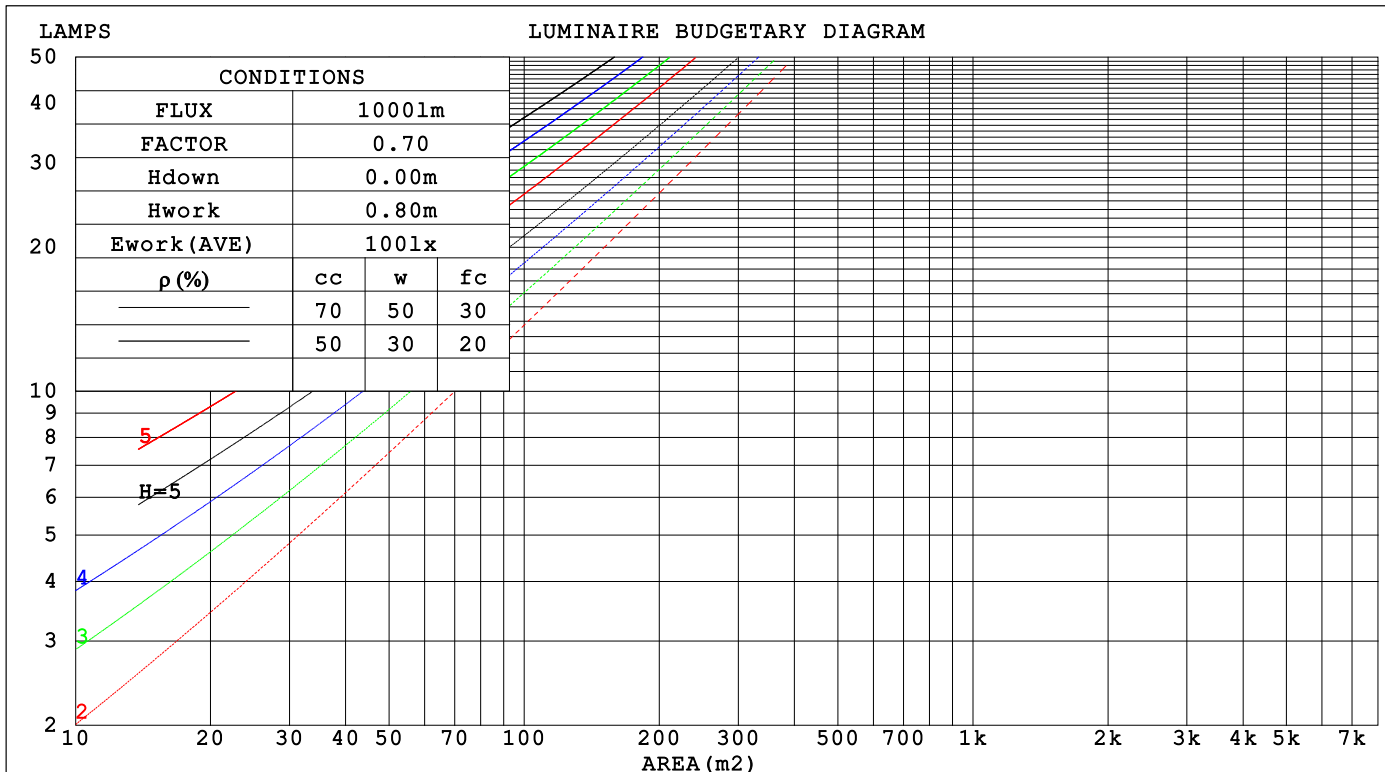
C Range: 0 - 360DEG  
C Interval: 22.5DEG  
Test Speed: HIGH  
Temperature:25.3DEG  
Operators:  
Test Date:2024-01-10

γ Range: 0 - 180DEG  
γ Interval: 2.0DEG  
Test System:EVERFINE GO-2000B\_V1 SYSTEM V2.00.450  
Humidity:65.0%  
Test Distance:6.040m [K=1.0000]  
Remarks:

## CU AND LUMINAIRE BUDGETARY ESTIMATE DIAGRAM

Test:U:23.998V I:0.4786A P:11.485W PF:1.0000 Freq:49.99Hz Lamp Flux:1.60352x80 lm		
NAME: 1220-A 幻影RGB	TYPE:	WEIGHT:
SPEC.:	DIM.:	SERIAL No.:
MFR.:	SUR.: 0.012*1	Shielding Angle:

pcc	80%			70%			50%			30%			10%			0
pw	50%	30%	10%	50%	30%	10%	50%	30%	10%	50%	30%	10%	50%	30%	10%	0
pfc	20%			20%			20%			20%			20%			0
RCR	RCR:Room Cavity Ratio															



C Range: 0 - 360DEG  
C Interval: 22.5DEG  
Test Speed: HIGH  
Temperature:25.3DEG  
Operators:  
Test Date:2024-01-10

γ Range: 0 - 180DEG  
γ Interval: 2.0DEG  
Test System:EVERFINE GO-2000B\_V1 SYSTEM V2.00.450  
Humidity:65.0%  
Test Distance:6.040m [K=1.0000]  
Remarks:

## WEC AND CCEC

Test:U:23.998V I:0.4786A P:11.485W PF:1.0000 Freq:49.99Hz Lamp Flux:1.60352x80 lm		
NAME: 1220-A 幻影RGB	TYPE:	WEIGHT:
SPEC.:	DIM.:	SERIAL No.:
MFR.:	SUR.: 0.012*1	Shielding Angle:

pcc	80%			70%			50%			30%			10%			0	
pw	50%	30%	10%	50%	30%	10%	50%	30%	10%	50%	30%	10%	50%	30%	10%	0	
pfc	20%			20%			20%			20%			20%			0	
RCR	RCR:Room Cavity Ratio						Wall Exitance Coefficients(WEC)										
0.0																	
1.0	.310	.176	.056	.303	.173	.055	.289	.166	.053	.276	.159	.051	.264	.153	.049		
2.0	.292	.160	.049	.285	.157	.048	.273	.152	.047	.262	.147	.046	.251	.142	.045		
3.0	.270	.144	.043	.264	.142	.043	.253	.137	.042	.243	.133	.041	.234	.130	.040		
4.0	.249	.130	.038	.244	.128	.038	.234	.124	.037	.225	.121	.037	.217	.118	.036		
5.0	.230	.117	.034	.226	.116	.034	.217	.113	.033	.209	.110	.033	.202	.108	.032		
6.0	.214	.107	.031	.210	.106	.030	.202	.103	.030	.195	.101	.030	.188	.099	.029		
7.0	.199	.098	.028	.195	.097	.028	.188	.095	.027	.182	.093	.027	.176	.091	.027		
8.0	.186	.091	.026	.182	.090	.025	.176	.088	.025	.170	.086	.025	.165	.085	.025		
9.0	.174	.084	.023	.171	.083	.023	.165	.082	.023	.160	.080	.023	.155	.079	.023		
10.0	.164	.078	.022	.161	.078	.022	.156	.076	.022	.151	.075	.021	.147	.074	.021		

pcc	80%			70%			50%			30%			10%			0	
pw	50%	30%	10%	50%	30%	10%	50%	30%	10%	50%	30%	10%	50%	30%	10%	0	
pfc	20%			20%			20%			20%			20%			0	
RCR	RCR:Room Cavity Ratio						Ceiling Cavity Exitance Coefficients (CCEC)										
0.0	.199	.199	.199	.170	.170	.170	.116	.116	.116	.067	.067	.067	.021	.021	.021		
1.0	.189	.164	.143	.161	.141	.123	.110	.097	.085	.064	.056	.049	.020	.018	.016		
2.0	.181	.140	.106	.155	.121	.092	.106	.084	.064	.061	.049	.038	.020	.016	.012		
3.0	.173	.123	.083	.148	.106	.072	.102	.074	.050	.059	.043	.030	.019	.014	.010		
4.0	.165	.109	.067	.142	.095	.058	.098	.066	.041	.056	.039	.024	.018	.013	.008		
5.0	.158	.099	.056	.136	.086	.048	.093	.060	.034	.054	.035	.020	.017	.011	.007		
6.0	.151	.091	.048	.130	.079	.042	.089	.055	.029	.052	.032	.017	.017	.011	.006		
7.0	.144	.084	.042	.124	.073	.036	.086	.051	.026	.050	.030	.015	.016	.010	.005		
8.0	.137	.078	.037	.118	.068	.032	.082	.048	.023	.048	.028	.014	.015	.009	.005		
9.0	.131	.073	.034	.113	.063	.029	.078	.045	.021	.046	.026	.012	.015	.009	.004		
10.0	.126	.069	.031	.108	.060	.027	.075	.042	.019	.044	.025	.011	.014	.008	.004		

C Range: 0 - 360DEG  
C Interval: 22.5DEG  
Test Speed: HIGH  
Temperature:25.3DEG  
Operators:  
Test Date:2024-01-10

γ Range: 0 - 180DEG  
γ Interval: 2.0DEG  
Test System:EVERFINE GO-2000B\_V1 SYSTEM V2.00.450  
Humidity:65.0%  
Test Distance:6.040m [K=1.0000]  
Remarks:

UGR(Unified Glare Rating) Table

Test:U:23.998V I:0.4786A P:11.485W PF:1.0000 Freq:49.99Hz Lamp Flux:1.60352x80 lm										
NAME: 1220-A 幻影RGB					TYPE:			WEIGHT:		
SPEC.:					DIM.:			SERIAL No.:		
MFR.:					SUR.: 0.012*1			Shielding Angle:		
ceiling/cavity	0.7	0.7	0.5	0.5	0.3	0.7	0.7	0.5	0.5	0.3
walls	0.5	0.3	0.5	0.3	0.3	0.5	0.3	0.5	0.3	0.3
working plane	0.2	0.2	0.2	0.2	0.2	0.2	0.2	0.2	0.2	0.2
Room dimensions	Viewed crosswise					Viewed endwise				
x = 2H y = 2H	24.1	25.6	24.4	25.8	26.0	23.8	25.3	24.1	25.5	25.7
3H	25.4	26.8	25.8	27.1	27.3	25.2	26.6	25.5	26.9	27.1
4H	25.9	27.2	26.2	27.5	27.7	25.7	27.1	26.1	27.3	27.6
6H	26.0	27.3	26.4	27.6	27.9	26.1	27.3	26.4	27.6	27.9
8H	26.0	27.2	26.3	27.5	27.8	26.1	27.4	26.5	27.7	28.0
12H	25.9	27.1	26.3	27.4	27.7	26.2	27.3	26.5	27.7	28.0
4H 2H	24.6	26.0	25.0	26.2	26.5	24.4	25.7	24.7	26.0	26.3
3H	26.2	27.4	26.6	27.7	28.0	26.0	27.2	26.4	27.5	27.8
4H	26.8	27.8	27.2	28.2	28.5	26.6	27.7	27.0	28.0	28.4
6H	27.1	28.0	27.5	28.4	28.8	27.1	28.0	27.5	28.4	28.8
8H	27.1	28.0	27.5	28.4	28.8	27.2	28.1	27.6	28.5	28.9
12H	27.1	27.9	27.5	28.3	28.7	27.3	28.1	27.7	28.5	28.9
8H 4H	27.0	27.9	27.4	28.3	28.7	26.9	27.8	27.3	28.1	28.6
6H	27.5	28.2	27.9	28.6	29.1	27.4	28.2	27.9	28.6	29.0
8H	27.6	28.2	28.1	28.7	29.1	27.6	28.3	28.1	28.7	29.2
12H	27.6	28.2	28.1	28.6	29.1	27.7	28.3	28.2	28.8	29.3
12H 4H	27.0	27.8	27.5	28.2	28.7	26.9	27.7	27.3	28.1	28.5
6H	27.5	28.2	28.0	28.6	29.1	27.5	28.1	28.0	28.6	29.0
8H	27.7	28.2	28.2	28.7	29.2	27.7	28.2	28.2	28.7	29.2
Variations with the observer position at spacings(CIE Pub.117):										
S = 1.0H	+ 0.2 / - 0.2					+ 0.2 / - 0.2				
1.5H	+ 0.2 / - 0.4					+ 0.2 / - 0.3				
2.0H	+ 0.2 / - 0.4					+ 0.2 / - 0.3				

CIE Pub.117, 128.3 lm Total Lamp Luminous Flux Correct (8log(F/F0) = -7.1)  
Area: 0.012 m2

C Range: 0 - 360DEG  
C Interval: 22.5DEG  
Test Speed: HIGH  
Temperature:25.3DEG  
Operators:  
Test Date:2024-01-10

γ Range: 0 - 180DEG  
γ Interval: 2.0DEG  
Test System:EVERFINE GO-2000B\_V1 SYSTEM V2.00.450  
Humidity:65.0%  
Test Distance:6.040m [K=1.0000]  
Remarks:

### UTILIZATION FACTORS TABLE

Test:U:23.998V I:0.4786A P:11.485W PF:1.0000 Freq:49.99Hz Lamp Flux:1.60352x80 lm		
NAME: 1220-A 幻影RGB	TYPE:	WEIGHT:
SPEC.:	DIM.:	SERIAL No.:
MFR.:	SUR.: 0.012*1	Shielding Angle:

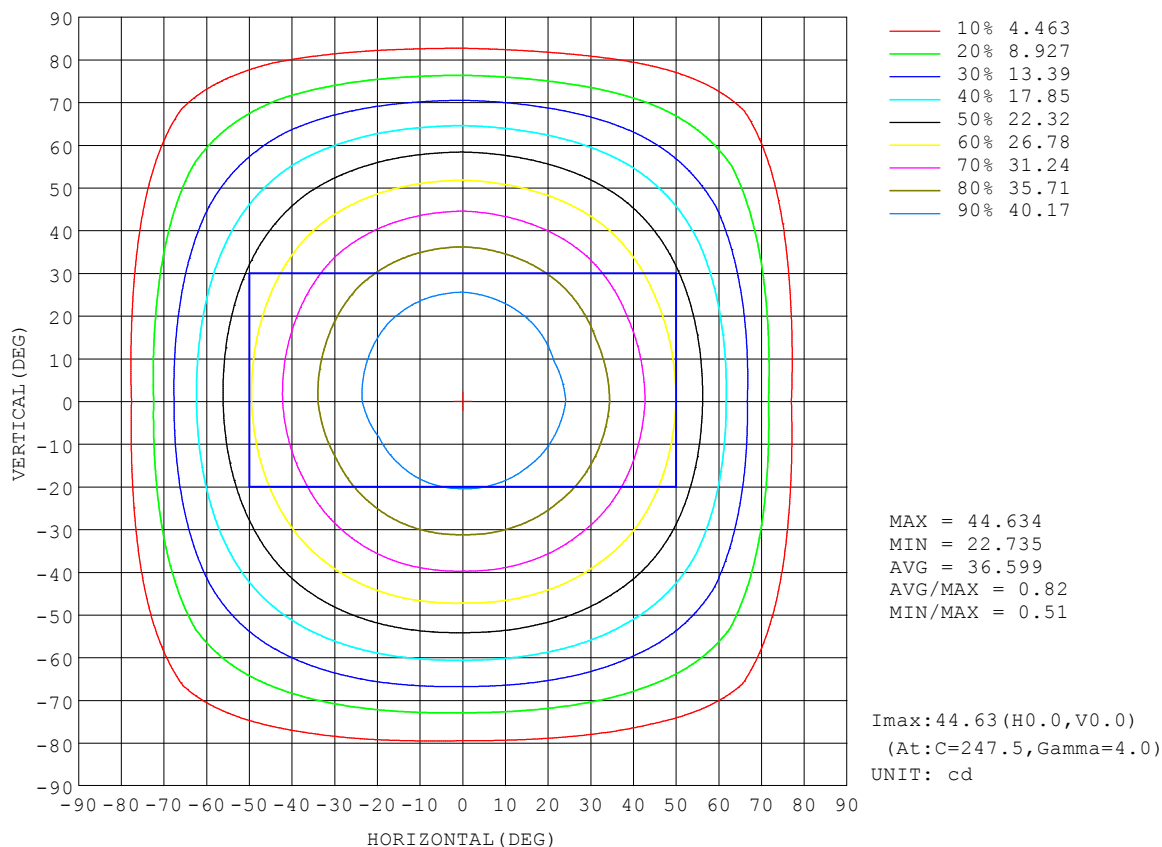
REFLECTANCE										
Ceiling	0.8	0.8	0.8	0.7	0.7	0.7	0.5	0.5	0.5	0
Walls	0.7	0.5	0.3	0.7	0.5	0.3	0.7	0.5	0.3	0
Working plane	0.2	0.2	0.2	0.2	0.2	0.2	0.2	0.2	0.2	0
ROOM INDEX	UTILIZATION FACTORS (PERCENT) $k(RI) \times RCR = 5$									
$k = 0.60$	57	45	38	56	45	38	55	45	38	32
0.80	67	55	48	66	55	48	64	54	47	40
1.00	75	64	57	74	64	57	72	65	56	49
1.25	83	72	65	81	71	64	78	70	64	56
1.50	88	78	71	86	77	70	83	75	69	61
2.00	95	86	79	93	85	79	89	82	77	69
2.50	98	91	84	96	89	84	92	86	82	73
3.00	102	95	89	100	93	88	95	90	86	77
4.00	106	100	95	103	98	94	99	95	91	82
5.00	108	103	99	106	101	98	101	98	94	85
ROOM INDEX	UF (total)									Direct
According to DIN EN 13032-2 2004			Suspended					SHRNOM = 1.25		

C Range: 0 - 360DEG  
C Interval: 22.5DEG  
Test Speed: HIGH  
Temperature:25.3DEG  
Operators:  
Test Date:2024-01-10

$\gamma$  Range: 0 - 180DEG  
 $\gamma$  Interval: 2.0DEG  
Test System:EVERFINE GO-2000B\_V1 SYSTEM V2.00.450  
Humidity:65.0%  
Test Distance:6.040m [K=1.0000]  
Remarks:

## ISOCANDELA DIAGRAM

Test:U:23.998V I:0.4786A P:11.485W PF:1.0000 Freq:49.99Hz Lamp Flux:1.60352x80 lm		
NAME: 1220-A 幻影RGB	TYPE:	WEIGHT:
SPEC.:	DIM.:	SERIAL No.:
MFR.:	SUR.: 0.012*1	Shielding Angle:



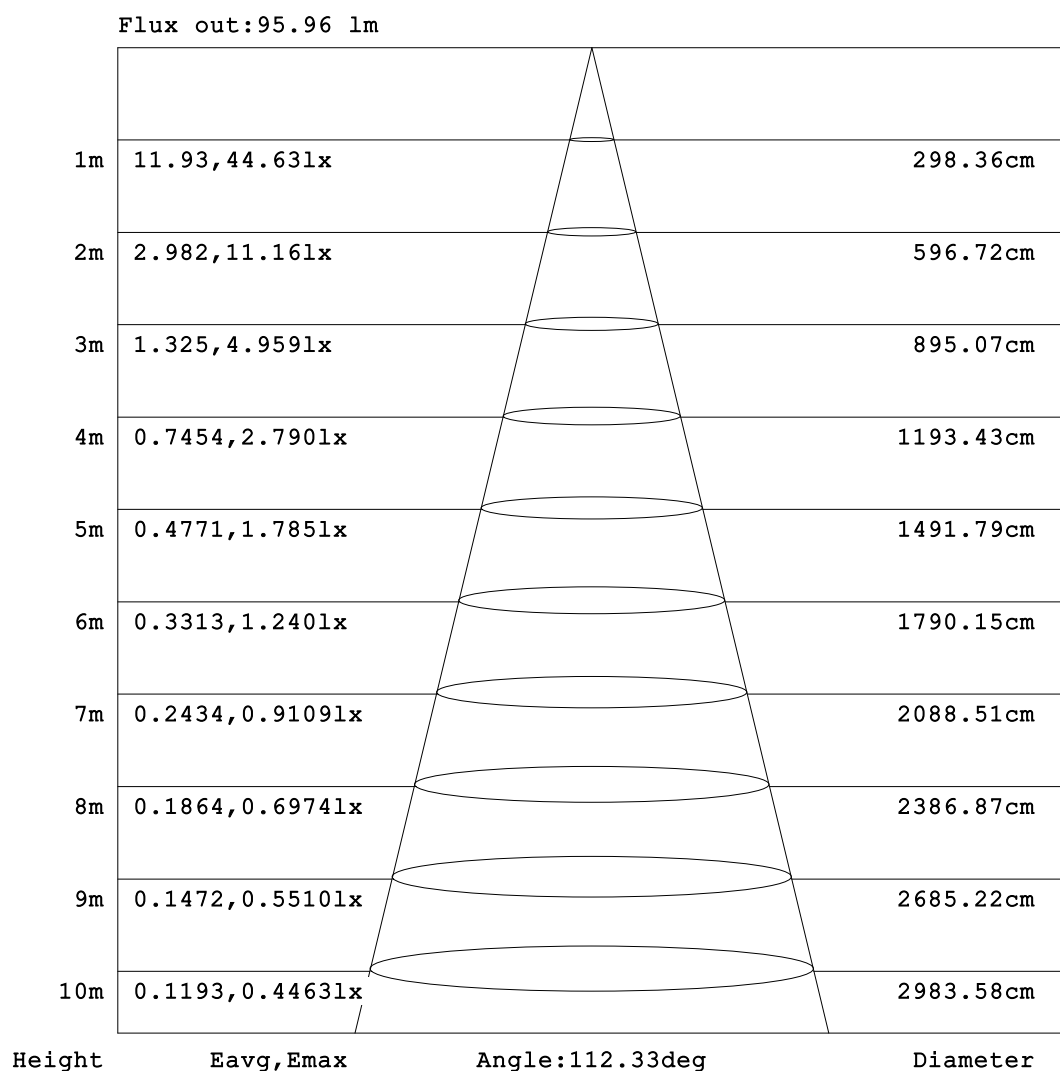
C Range: 0 - 360DEG  
C Interval: 22.5DEG  
Test Speed: HIGH  
Temperature:25.3DEG  
Operators:  
Test Date:2024-01-10

$\gamma$  Range: 0 - 180DEG  
 $\gamma$  Interval: 2.0DEG  
Test System:EVERFINE GO-2000B\_V1 SYSTEM V2.00.450  
Humidity:65.0%  
Test Distance:6.040m [K=1.0000]  
Remarks:



### AAI Figure

Test:U:23.998V I:0.4786A P:11.485W PF:1.0000 Freq:49.99Hz Lamp Flux:1.60352x80 lm		
NAME: 1220-A 幻影RGB	TYPE:	WEIGHT:
SPEC.:	DIM.:	SERIAL No.:
MFR.:	SUR.: 0.012*1	Shielding Angle:



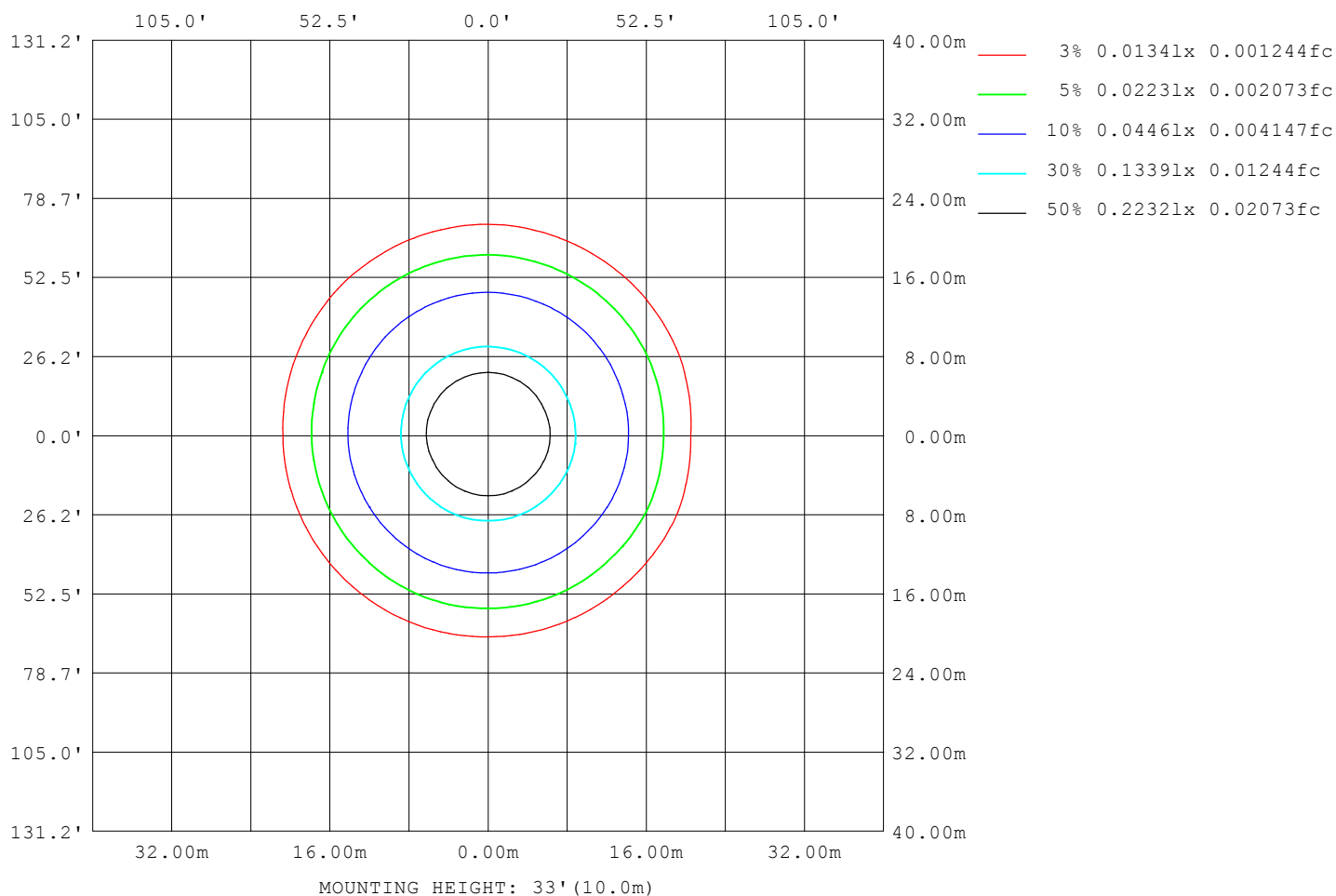
Note:The Curves indicate the illuminated area and the average illumination when the luminaire is at different distance.

C Range: 0 - 360DEG  
C Interval: 22.5DEG  
Test Speed: HIGH  
Temperature:25.3DEG  
Operators:  
Test Date:2024-01-10

γ Range: 0 - 180DEG  
γ Interval: 2.0DEG  
Test System:EVERFINE GO-2000B\_V1 SYSTEM V2.00.450  
Humidity:65.0%  
Test Distance:6.040m [K=1.0000]  
Remarks:

## ISOLUX DIAGRAM

Test:U:23.998V I:0.4786A P:11.485W PF:1.0000 Freq:49.99Hz Lamp Flux:1.60352x80 lm		
NAME: 1220-A 幻影RGB	TYPE:	WEIGHT:
SPEC.:	DIM.:	SERIAL No.:
MFR.:	SUR.: 0.012*1	Shielding Angle:



C Range: 0 - 360DEG  
C Interval: 22.5DEG  
Test Speed: HIGH  
Temperature: 25.3DEG  
Operators:  
Test Date: 2024-01-10

$\gamma$  Range: 0 - 180DEG  
 $\gamma$  Interval: 2.0DEG  
Test System: EVERFINE GO-2000B\_V1 SYSTEM V2.00.450  
Humidity: 65.0%  
Test Distance: 6.040m [K=1.0000]  
Remarks:

## LED Avg.L Report

Test:U:23.998V I:0.4786A P:11.485W PF:1.0000 Freq:49.99Hz Lamp Flux:1.60352x80 lm		
NAME: 1220-A 幻影RGB	TYPE:	WEIGHT:
SPEC.:	DIM.:	SERIAL No.:
MFR.:	SUR.: 0.012*1	Shielding Angle:

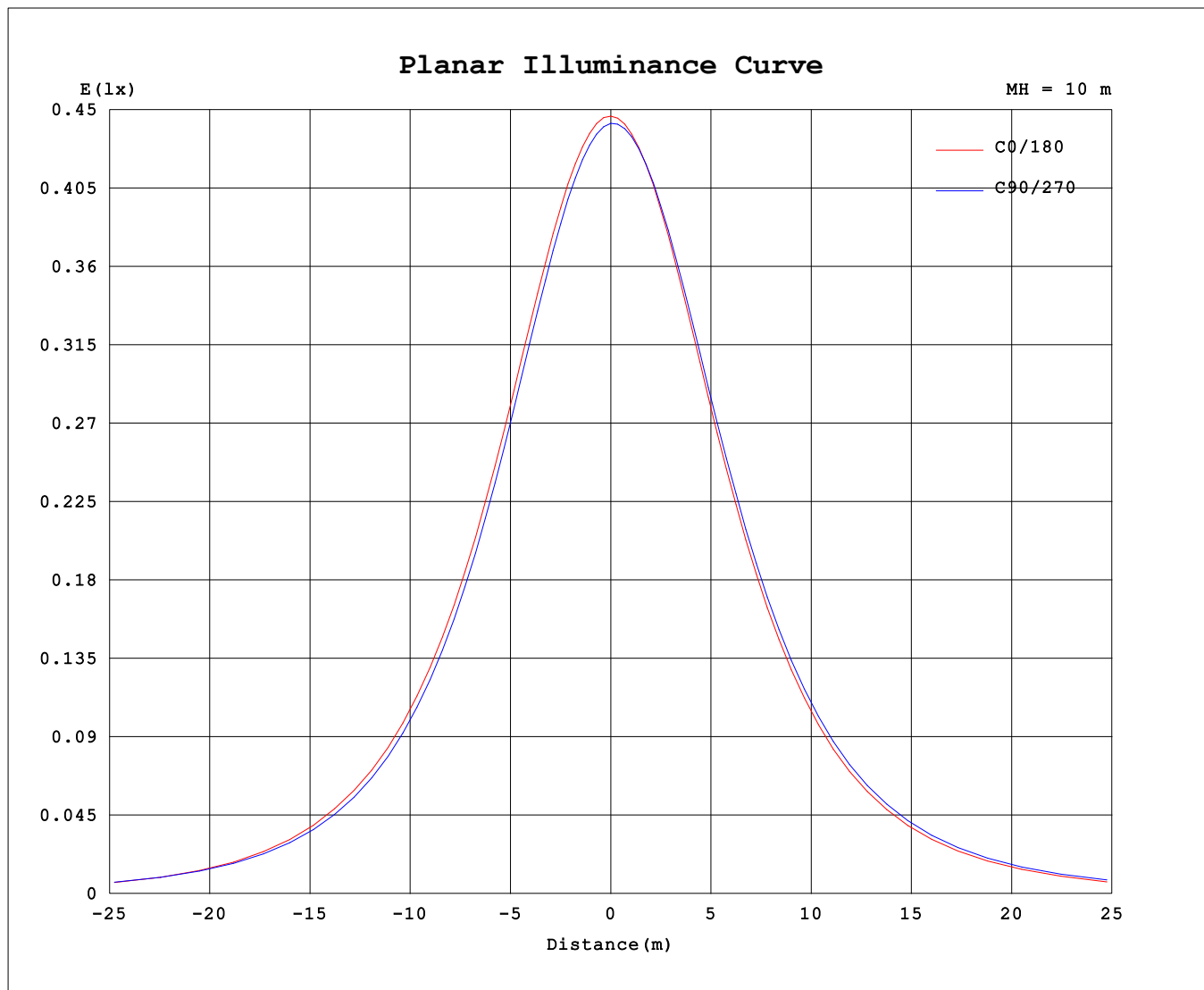
AvgL	cd/m2
L_0~180 (65) av	2999
L_0~180 (75) av	2024
L_0~180 (85) av	133
L_90~270 (65) av	3179
L_90~270 (75) av	2803
L_90~270 (85) av	2258
L_45 (65) av	3174
L_45 (75) av	2789
L_45 (85) av	2153

Standard: GB/T 29293-2012

C Range: 0 - 360DEG  
C Interval: 22.5DEG  
Test Speed: HIGH  
Temperature:25.3DEG  
Operators:  
Test Date:2024-01-10

γ Range: 0 - 180DEG  
γ Interval: 2.0DEG  
Test System:EVERFINE GO-2000B\_V1 SYSTEM V2.00.450  
Humidity:65.0%  
Test Distance:6.040m [K=1.0000]  
Remarks:

## Planar Illuminance Curve



C Range: 0 - 360DEG  
C Interval: 22.5DEG  
Test Speed: HIGH  
Temperature: 25.3DEG  
Operators:  
Test Date: 2024-01-10

$\gamma$  Range: 0 - 180DEG  
 $\gamma$  Interval: 2.0DEG  
Test System: EVERFINE GO-2000B\_V1 SYSTEM V2.00.450  
Humidity: 65.0%  
Test Distance: 6.040m [K=1.0000]  
Remarks:

## LUMINOUS DISTRIBUTION INTENSITY DATA

Test:U:23.998V I:0.4786A P:11.485W PF:1.0000 Freq:49.99Hz Lamp Flux:1.60352x80 lm																	
NAME: 1220-A 幻影RGB									TYPE:						WEIGHT:		
SPEC.:									DIM.:						SERIAL No.:		
MFR.:									SUR.: 0.012*1						Shielding Angle:		

Table--1

UNIT: cd

C (DEG) γ (DEG)		0	22.5	45	67.5	90	112.5	135	157.5	180	202.5	225	247.5	270	292.5	315	337.5			
0		44.3	44.3	44.3	44.3	44.3	44.3	44.3	44.3	44.3	44.3	44.3	44.3	44.3	44.3	44.3	44.3			
5		44.2	44.1	44.0	44.0	44.0	44.0	44.0	44.1	44.1	44.2	44.2	44.3	44.3	44.3	44.2	44.2			
10		43.5	43.4	43.2	43.1	43.1	43.2	43.2	43.3	43.5	43.6	43.8	43.9	43.9	43.9	43.8	43.7			
15		42.8	42.6	42.3	42.2	42.2	42.3	42.3	42.5	42.7	42.9	43.1	43.3	43.3	43.2	43.1	43.0			
20		41.2	40.9	40.6	40.5	40.4	40.5	40.6	40.8	41.0	41.4	41.7	41.9	42.0	41.8	41.7	41.5			
25		39.9	39.5	39.1	39.0	38.9	39.1	39.2	39.4	39.7	40.1	40.5	40.7	40.8	40.6	40.4	40.2			
30		37.5	37.1	36.6	36.4	36.3	36.5	36.7	37.0	37.2	37.7	38.2	38.4	38.5	38.4	38.2	37.8			
35		35.6	35.2	34.7	34.5	34.4	34.6	34.8	35.1	35.4	35.8	36.4	36.7	36.8	36.6	36.4	36.0			
40		32.5	32.0	31.5	31.3	31.1	31.4	31.6	31.9	32.2	32.7	33.4	33.7	33.8	33.6	33.3	32.9			
45		30.2	29.7	29.1	29.0	28.8	29.1	29.3	29.6	29.9	30.5	31.2	31.4	31.6	31.3	31.1	30.6			
50		26.5	26.0	25.4	25.2	25.1	25.4	25.6	26.0	26.2	26.8	27.5	27.8	28.0	27.7	27.4	27.0			
55		23.9	23.4	22.8	22.6	22.5	22.8	23.0	23.3	23.6	24.2	24.9	25.2	25.3	25.1	24.8	24.3			
60		19.2	19.2	18.6	18.4	18.3	18.6	18.9	19.2	19.5	20.0	20.8	21.1	21.2	20.9	20.6	20.2			
65		15.7	16.3	15.7	15.5	15.4	15.8	16.0	16.4	16.4	17.2	17.9	18.2	18.3	18.0	17.7	17.3			
70		10.3	11.9	11.3	11.1	11.1	11.4	11.6	12.0	11.1	12.7	13.4	13.7	13.8	13.4	13.2	12.7			
75		6.85	8.89	8.38	8.23	8.16	8.49	8.71	9.02	7.45	9.69	10.4	10.7	10.7	10.4	10.1	9.69			
80		2.32	4.67	4.25	4.21	4.13	4.44	4.58	4.83	2.61	5.34	5.99	6.22	6.25	5.94	5.68	5.31			
85		0.31	2.33	2.10	2.08	2.06	2.25	2.32	2.44	0.34	2.81	3.41	3.58	3.64	3.34	3.15	2.80			
90		0.01	0.62	0.63	0.56	0.53	0.57	0.58	0.49	0.01	0.48	0.83	1.00	1.04	0.92	0.82	0.70			
95		0.01	0.57	0.56	0.46	0.42	0.43	0.47	0.39	0.01	0.27	0.38	0.49	0.47	0.49	0.47	0.57			
100		0.01	0.51	0.51	0.40	0.37	0.37	0.41	0.35	0.02	0.20	0.29	0.35	0.31	0.37	0.41	0.51			
105		0.01	0.46	0.48	0.37	0.34	0.34	0.39	0.25	0.02	0.14	0.26	0.32	0.27	0.33	0.37	0.45			
110		0.01	0.36	0.44	0.33	0.30	0.31	0.34	0.20	0.03	0.09	0.21	0.28	0.23	0.29	0.32	0.34			
115		0.01	0.28	0.41	0.31	0.29	0.29	0.32	0.14	0.04	0.08	0.18	0.25	0.21	0.26	0.28	0.27			
120		0.02	0.19	0.35	0.28	0.27	0.27	0.19	0.08	0.05	0.06	0.12	0.22	0.18	0.23	0.24	0.19			
125		0.03	0.15	0.32	0.26	0.26	0.25	0.17	0.08	0.06	0.06	0.10	0.19	0.16	0.21	0.21	0.16			
130		0.04	0.11	0.26	0.24	0.24	0.19	0.16	0.08	0.06	0.06	0.10	0.15	0.14	0.18	0.17	0.13			
135		0.04	0.09	0.23	0.22	0.23	0.15	0.13	0.08	0.07	0.07	0.10	0.12	0.13	0.17	0.15	0.12			
140		0.05	0.09	0.19	0.18	0.21	0.13	0.13	0.08	0.08	0.07	0.10	0.12	0.12	0.16	0.12	0.11			
145		0.06	0.09	0.17	0.17	0.19	0.12	0.12	0.09	0.08	0.07	0.10	0.11	0.12	0.15	0.12	0.11			
150		0.07	0.10	0.13	0.14	0.18	0.12	0.11	0.10	0.10	0.08	0.10	0.11	0.11	0.13	0.12	0.10			
155		0.07	0.10	0.12	0.13	0.16	0.12	0.10	0.10	0.10	0.08	0.10	0.11	0.11	0.13	0.12	0.10			
160		0.08	0.10	0.12	0.13	0.13	0.12	0.10	0.10	0.10	0.09	0.10	0.11	0.11	0.13	0.11	0.10			
165		0.08	0.10	0.11	0.12	0.12	0.12	0.10	0.10	0.10	0.09	0.10	0.11	0.11	0.12	0.11	0.10			
170		0.09	0.10	0.11	0.11	0.12	0.12	0.10	0.10	0.10	0.09	0.10	0.11	0.11	0.12	0.11	0.10			
175		0.09	0.10	0.11	0.11	0.12	0.12	0.10	0.10	0.10	0.09	0.10	0.11	0.11	0.12	0.11	0.10			
180		0.10	0.10	0.11	0.11	0.12	0.12	0.10	0.10	0.10	0.10	0.10	0.11	0.11	0.12	0.12	0.10			

C Range: 0 - 360DEG  
C Interval: 22.5DEG  
Test Speed: HIGH  
Temperature:25.3DEG  
Operators:  
Test Date:2024-01-10

γ Range: 0 - 180DEG  
γ Interval: 2.0DEG  
Test System:EVERFINE GO-2000B\_V1 SYSTEM V2.00.450  
Humidity:65.0%  
Test Distance:6.040m [K=1.0000]  
Remarks: